

"Asia Region Biennial IASC Conference"

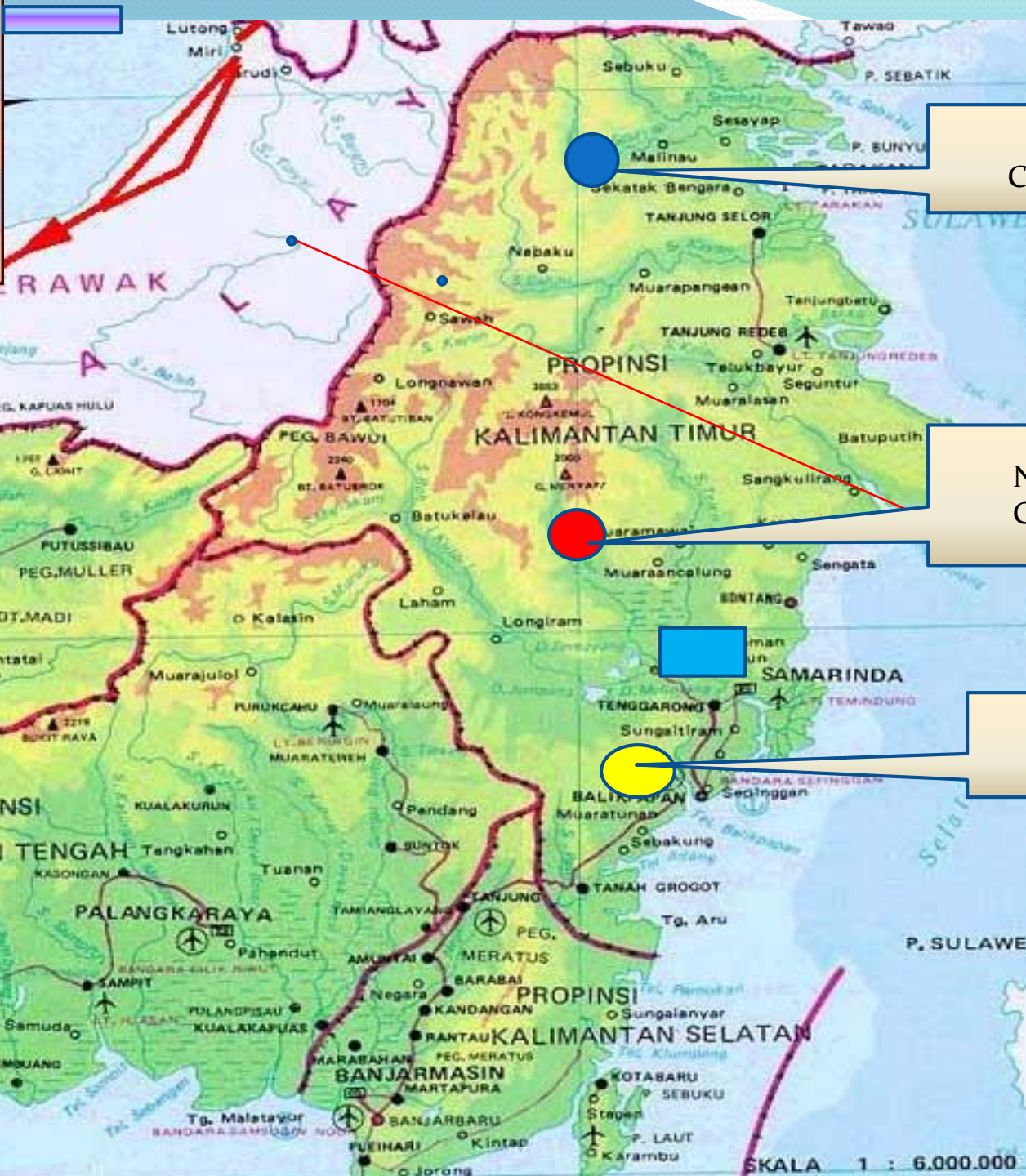
COMMUNITY BASED-FOREST MANAGERMENTS OF EAST KALIMANTAN AND NORTH KALIMANTAN

by

Dr. Ndan Imang

(Center for Social Forestry, University of Mualwarman Indonesia)

**Asian Institute of Technology (AIT),
Bangkok Thailand, 13-16 July 2018**



SETULANG,
Community Forest

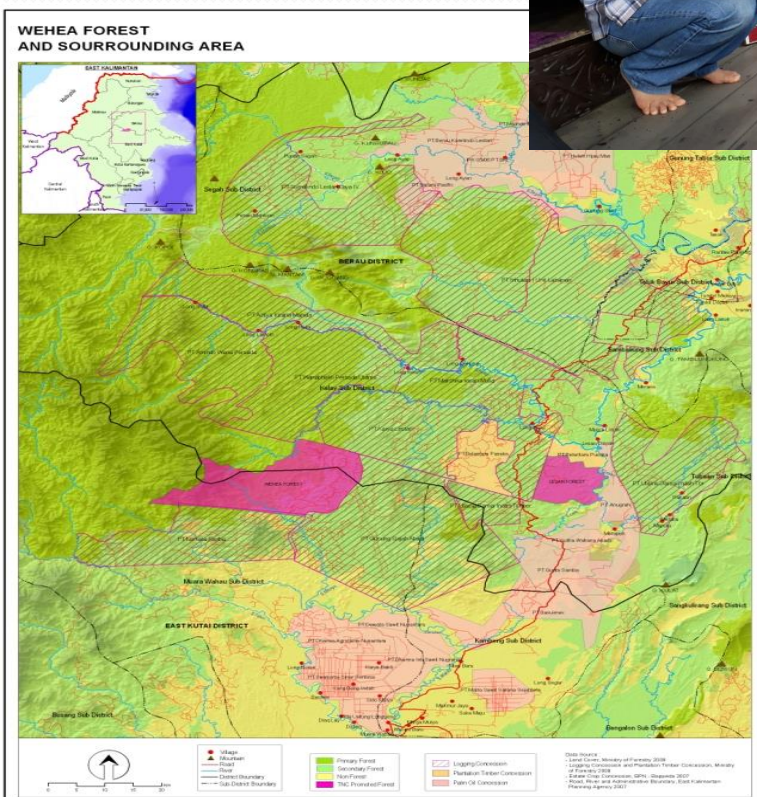
NEHAS LIAH BING, Wehea
Customary Protected Forest

SUNGAI WAIN,
Protected Forest

Site 1: SETULANG Community Forest (*Taneq Olen*)



Site2 : Customary Protected Forest (Hutan Adat Wehea) in Nehas Liah Bing Village





Site 3: SUNGAI WAIN Protected Forest



Background and Profile of the Sites

	Wehea Customary Forest	Setulang, Community Forest	Sungai Wain, Protected Forest
History/ Initiation of the forest	Ex- Gruti logging concession: joint survey 2000 found 600 orangutan nests rich of and biodiversity	1969; 2003 Man. Board; 2011 Com Forest; 2013 tourism <i>village (Desa wisata)</i>	Governor Decree No. 552.12/1988 regarding Forest Group of Wain River (<i>Kelompok Hutan Sungai Wain</i>) 1988 MoF issued MoF Decree No. 118/Kpts-VII/1988-10,025 ha
Size	38,000 ha	5,314 ha	10,025 ha
Type of forest	Over-logged, primary forest	Excellent forest	Over-logged forest, secondary forest
Main actor	Badan Pengelola /by community	Badan Pengelola/by community	KRPH (<i>Kesatuan Resort Pengelolaan Hutan</i> and Kelompok Tani
Objective	protect primary forest of the Wehean ethnic, sanctuary for <i>Orangutan</i> , sustain biodiversity, keep the river clean	enable access to forest resources, protection of the natural resources for basic needs, income, eco-tourism	To protect forest for water reservoir and habitat for wild life

Benefits of the forest

	Wehea Customary Forest	Setulang, Community Forest	Sungai Wain, Protected Forest
	Vegetables/shoots, hunting, fishing, eco-tourism, clean water, recreational activities, sanctuary for wild life, rattan,	Vegetables/shoots, hunting, fishing, income from tourism, clean water, recreational activities, timber for housing, research site	Supply 40% of clean water for Balikpapan, farming along the border as the buffer-zone, conservation of biodiversity and life support system



Action to conserve, and major challenges

	Wehea Customary Forest	Setulang, Community Forest	Sungai Wain, Protected Forest
Action to conserve	<ul style="list-style-type: none"> Forest patrol, village rule, socialization to surrounding communities, plant forest fruits, lodge, gazebo, tower, 	Management Board Office, delineation, Forest patrol, village rule, promotion,	Training for farmers, seedlings (rubber, fruits, and timber), fire protection, gazebos, tracking tract and bridge, Research Center, sun bear boat
Major challenges and threats	Oil palm, Swidden agriculture, illegal NTFP collectors, illegal logging and mining	Illegal logging from neighbor villages, succession of generation, oil palm	Urbanization, settlement, farming, Wild forest fire Poaching



Government and NGOs Support

	Wehea Customary Forest	Setulang, Community Forest	Sungai Wain, Protected Forest
Govt. support	Small budget from bird research project,	Tourism village, District govt. improved access , Customary Hall (<i>Lamin Adat</i>), fruits seedling to enrich the forest	Training for farmers, provides fertilizer and seedling for farmers,
NGO/ Company Support	Develop Board Management Office, facilitating students, support logistic for forest patrol	Borneo RAVE conducted expedition concentrating on raising interest and awareness of the location GTZ Germany and CIFOR	Develop botanical garden,



Need for support

	Wehea Customary Forest	Setulang, Community Forest	Sungai Wain, Protected Forest
Financial support	forest patrol, motorbike, daily office, expenes flying-fox, to set up solar cell, gazebo and lodges, tree-house.	Forest patrol, build road, Incentive and logistic for rangers and office expenses.	To improve sustainable farming along the border, operational for forest patrol
Non-financial support	Training to improve human resources in Media	Training to improve tourism industry	Forest fire protection /awareness

CPRs Boundary and access (Ostrom's principles)

	Wehea Customary Forest	Setulang, Community Forest	Sungai Wain, Protected Forest
Defining boundary	Clear, but susceptible for encroachment	Clear, but susceptible for encroachment	Clear, but susceptible for encroachment
Conflict /conflict resolution	No conflict	Boundary conflict with neighbor	No conflict
CPRs Access	Equal access for villagers in accordance with village rule	Equal access for villagers in accordance with village rule	Limited access for farmers
Customary rules over NTFP extraction and forest management	Drafted by villager	DrAfted by villager	Drafted by Govt./ <i>Badan Pengelola</i>

Conclusion

- Forest management that initiated by forest communities or Customary Institution (*Lembaga Adat*) seems effective to protect the forest
- Lack of government support
- Financial and skill supports are needed to patrol the forest and to develop supporting facilities
- Management Board (*Badan Pengelola*) still need skill improvement to manage the forest as an tourism industry



Thank you for
attention